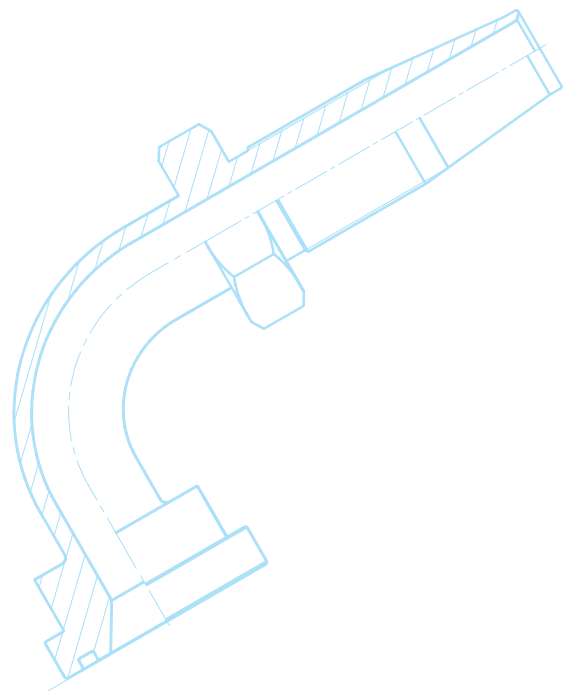
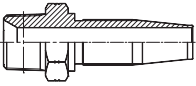
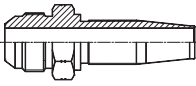
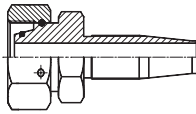
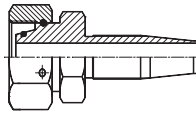
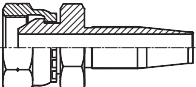
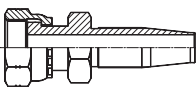
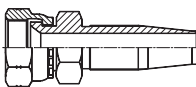
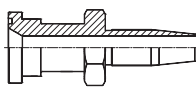
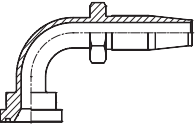
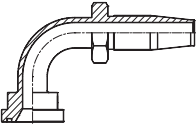
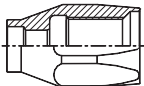


可拆式芯 Reusable hose fitting

E

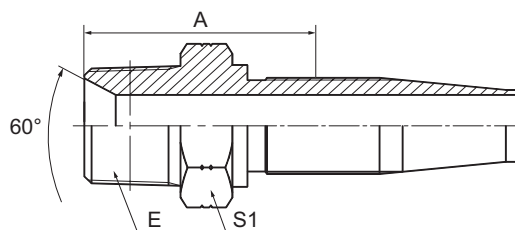


型号索引 Part NO. Index

 <p>15618 Page E-1</p>	 <p>16718 Page E-1</p>	 <p>20418D Page E-2</p>	 <p>20518D Page E-3</p>
 <p>22618D Page E-4</p>	 <p>24218D Page E-5</p>	 <p>26718D Page E-6</p>	 <p>87318D Page E-7</p>
 <p>87398D Page E-8</p>	 <p>87698D Page E-9</p>	 <p>00518 Page E-10</p>	

15618

美制布锥管螺纹
NPT MALE

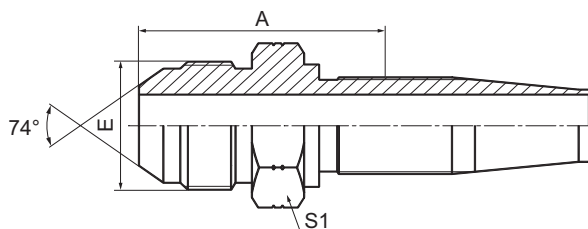


代号 PART NO.	螺纹 E THREAD E	软管 HOSE BORE		尺寸 DIMENSIONS	
		公称内径 DN	标号 DASH	A	S1
15618-02-04	Z1/8" × 27	-	04	25.5	12
15618-04-04	Z1/4" × 18	-	04	30	17
15618-04-06	Z1/4" × 18	-	06	31	17
15618-06-05	Z3/8" × 18	-	05	32.9	19
15618-06-06	Z3/8" × 18	-	06	32	19
15618-08-08	Z1/2" × 14	-	08	40.5	22
15618-12-10	Z3/4" × 14	-	10	42.5	30
15618-12-12	Z3/4" × 14	-	12	43	30
15618-16-16	Z1" × 11.5	-	16	46.5	36
15618-20-20	Z1.1/4" × 11.5	-	20	51.5	46
15618-24-24	Z1.1/2" × 11.5	-	24	52.5	50
15618-32-32	Z2" × 11.5	-	32	55	65

注：适用于 SAE 100R5 软管。Note: Suitable for SAE 100R5 hose.

16718

美制 JIC 外螺纹 74° 外锥面
JIC MALE 74° CONE

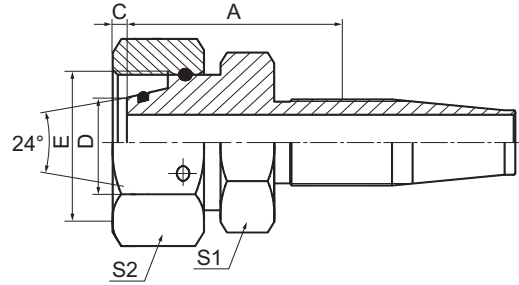


代号 PART NO.	螺纹 E THREAD E	软管 HOSE BORE		尺寸 DIMENSIONS	
		公称内径 DN	标号 DASH	A	S1
16718-04-04	7/16" × 20	-	04	29	12
16718-06-05	9/16" × 18	-	05	31	17
16718-06-06	9/16" × 18	-	06	32	17
16718-08-06	3/4" × 16	-	06	34.7	22
16718-08-08	3/4" × 16	-	08	38	22
16718-10-10	7/8" × 14	-	10	40.5	24
16718-12-12	1.1/16" × 12	-	12	45.5	30
16718-16-16	1.5/16" × 12	-	16	44	36
16718-20-20	1.5/8" × 12	-	20	49.5	46
16718-24-24	1.7/8" × 12	-	24	52.5	50

注：适用于 SAE 100R5 软管。Note: Suitable for SAE 100R5 hose.

20418D

公制内螺纹 24° 锥带 O 形圈轻系列
 METRIC FEMALE 24° CONE O-RING L.T.

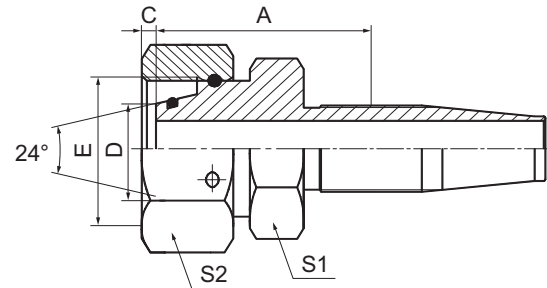


代号 PART NO.	螺纹 E THREAD E	软管 HOSE BORE		管子外径 D TUBE D	尺寸 DIMENSIONS			
		公称内径 DN	标号 DASH		A	C	S1	S2
20418D-14-04W	M14 × 1.5	5	04	8	31	1.4	12	17
20418D-16-05W	M16 × 1.5	6	05	10	32.9	2.1	14	19
20418D-18-06W	M18 × 1.5	8	06	12	33	1.8	17	22
20418D-22-08W	M22 × 1.5	11	08	15	36	3	19	27
20418D-26-10W	M26 × 1.5	13	10	18	41.5	2.1	27	32
20418D-30-12W	M30 × 2	16	12	22	43.5	3.8	30	36
20418D-36-16W	M36 × 2	22	16	28	41.5	4.5	36	41
20418D-45-16W	M45 × 2	22	16	35	45	4	41	50
20418D-45-20W	M45 × 2	28	20	35	45	4	41	50
20418D-52-24W	M52 × 2	35	24	42	48.5	4	50	60

注：适用于 SAE 100R5 软管。Note: Suitable for SAE 100R5 hose.

20518D

公制内螺纹 24° 锥带 O 形圈重系列
METRIC FEMALE 24° CONE O-RING H.T.

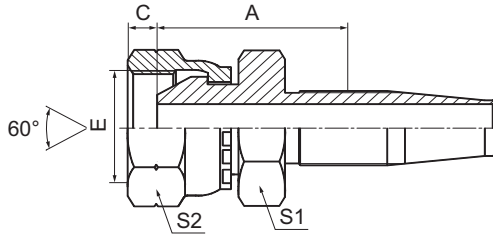


代号 PART NO.	螺纹 E THREAD E	软管 HOSE BORE		管子外径 D TUBE D	尺寸 DIMENSIONS			
		公称内径 DN	标号 DASH		A	C	S1	S2
20518D-16-04W	M14 × 1.5	5	04	8	31.5	1.8	14	19
20518D-16-05W	M16 × 1.5	6	05	8	33.4	1.8	14	19
20518D-18-04W	M18 × 1.5	5	04	10	32	1.5	17	22
20518D-18-06W	M18 × 1.5	8	06	10	33	1.5	17	22
20518D-20-06W	M20 × 1.5	8	06	12	33.5	2.5	17	24
20518D-22-06W	M22 × 1.5	8	06	14	33	3	19	27
20518D-24-08W	M24 × 1.5	11	08	16	36.5	3	22	30
20518D-30-10W	M30 × 2	13	10	20	45	2.5	27	36
20518D-30-12W	M30 × 2	16	12	20	45.5	2.5	27	36
20518D-36-12W	M36 × 2	16	12	25	46.5	3.2	36	41
20518D-36-16W	M36 × 2	22	16	25	43	3.2	36	41
20518D-42-16W	M42 × 2	22	16	30	46	3.9	41	50
20518D-42-20W	M42 × 2	28	20	30	46	3.9	41	50
20518D-52-20W	M52 × 2	28	20	38	48	4.5	50	60
20518D-52-24W	M52 × 2	35	24	38	48	4.5	50	60

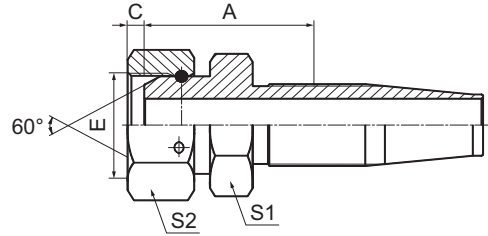
注：适用于 SAE 100R5 软管。Note: Suitable for SAE 100R5 hose.

22618D / 22618D W

英制内螺纹 60° 外锥面
BSP FEMALE 60° CONE



22618D



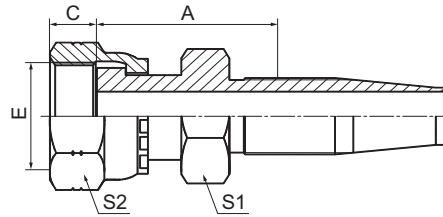
22618D W

代号 PART NO.	螺纹 E THREAD E	软管 HOSE BORE		尺寸 DIMENSIONS			
		公称内径 DN	标号 DASH	A	C	S1	S2
22618D-04-04	G1/4" × 19	-	04	26	5.5	14	19
22618D-06-05	G3/8" × 19	-	05	29.1	6.3	17	22
22618D-06-06	G3/8" × 19	-	06	30	6.3	17	22
22618D-08-08	G1/2" × 14	-	08	35	7.5	19	27
22618D-10-10	G5/8" × 14	-	10	35.5	9.5	22	30
22618D-12-12	G3/4" × 14	-	12	38.5	10.9	27	32
22618D-16-16	G1" × 11	-	16	37	11.7	38	41
22618D-20-20W	G1.1/4" × 11	-	20	43.5	11	41	50

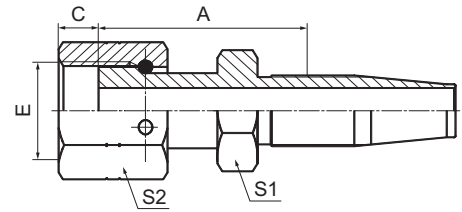
注：适用于 SAE 100R5 软管。Note: Suitable for SAE 100R5 hose.

24218D / 24218D W

美制 ORFS 内螺纹平面双六角
ORFS FEMALE FLAT
SEAT DOUBLE HEXAGON



24218D



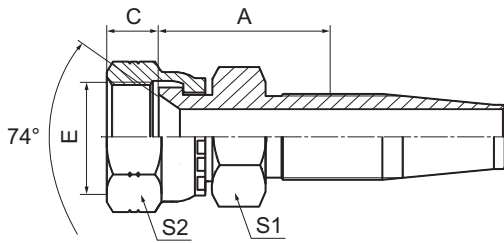
24218D W

代号 PART NO.	螺纹 E THREAD E	软管 HOSE BORE		尺寸 DIMENSIONS			
		公称内径 DN	标号 DASH	A	C	S1	S2
24218D-04-04	9/16" × 18	-	04	30.5	8.5	14	19
24218D-04-05	9/16" × 18	-	05	32	8.5	14	19
24218D-06-06	11/16" × 16	-	06	34.5	10	17	22
24218D-08-08	13/16" × 16	-	08	41.5	11	19	27
24218D-10-10	1" × 14	-	10	47.5	13.5	24	30
24218D-12-12	1.3/16" × 12	-	12	50.5	15	30	36
24218D-16-16	1.7/16" × 12	-	16	49	15	36	41
24218D-20-20W	1.11/16" × 12	-	20	54.5	15	41	50
24218D-24-24W	2" × 12	-	24	56.5	16	50	60

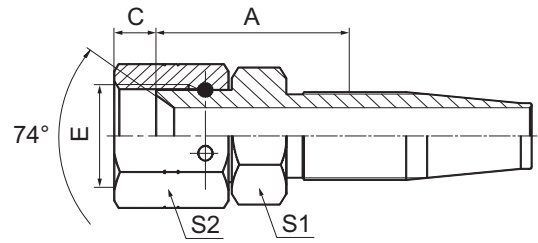
注：适用于 SAE 100R5 软管。Note: Suitable for SAE 100R5 hose.

26718D / 26718D W

美制 JIC 内螺纹 74° 内锥面
JIC FEMALE 74° CONE SEAT



26718D



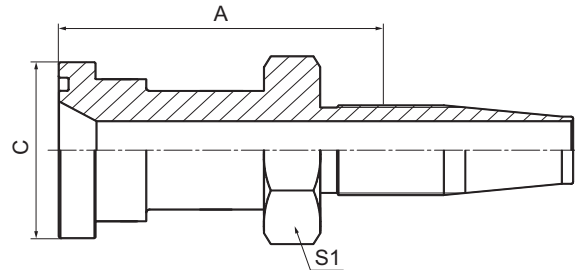
26718D W

代号 PART NO.	螺纹 E THREAD E	软管 HOSE BORE		尺寸 DIMENSIONS			
		公称内径 DN	标号 DASH	A	C	S1	S2
26718D-04-04	7/16" × 20	-	04	22	9	14	15
26718D-05-05	1/2" × 20	-	05	25.4	9.5	14	17
26718D-06-06	9/16" × 18	-	06	24.5	10.5	17	19
26718D-08-08	3/4" × 16	-	08	31.5	11	22	24
26718D-10-10	7/8" × 14	-	10	35	13	27	27
26718D-12-12	1.1/16" × 12	-	12	37	15	32	32
26718D-16-16	1.5/16" × 12	-	16	33.5	16	38	41
26718D-20-20W	1.5/8" × 12	-	20	41.5	17	41	50
26718D-24-24W	1.7/8" × 12	-	24	43	20	46	55
26718D-32-32W	2.1/2" × 12	-	32	45.5	23.5	65	75

注：适用于 SAE 100R5 软管。Note: Suitable for SAE 100R5 hose.

87318D

SAE 法兰 3000 PSI
SAE FLANGE 3000 PSI

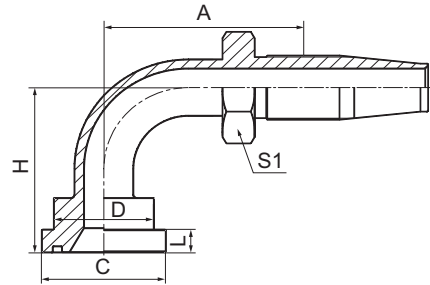


代号 PART NO.	螺纹 E THREAD E	软管 HOSE BORE		尺寸 DIMENSIONS		
		公称内径 DN	标号 DASH	S1	A	C
87318D-08-08	1/2"	11	08	22	54	30.2
87318D-12-12	3/4"	16	12	27	55	38.1
87318D-16-16	1"	22	16	32	55	44.4
87318D-20-20	1.1/4"	28	20	41	58	50.8
87318D-24-24	1.1/2"	35	24	46	70	60.3
87318D-32-32	2"	46	32	60	72	71.4

注：适用于 SAE 100R5 软管。Note: Suitable for SAE 100R5 hose.

87398D

90° SAE 法兰 3000 PSI
 90° SAE FLANGE 3000 PSI



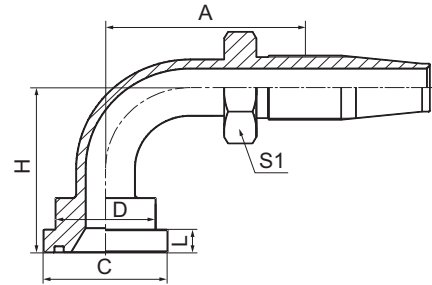
代号 PART NO.	螺纹 E THREAD E	软管 HOSE BORE		尺寸 DIMENSIONS					
		公称内径 DN	标号 DASH	A	C	D	H	L	S1
87398D-08-08	1/2"	12	08	53	30.2	24	47	6.73	27
87398D-12-10	3/4"	16	10	66.5	38.1	32	52.5	6.73	32
87398D-12-12	3/4"	20	12	79.5	38.1	32	62	6.73	32
87398D-16-12	1"	20	12	79.5	44.4	38	62	8	32
87398D-16-16	1"	25	16	86.5	44.4	38	67.5	8	41
87398D-20-16	1.1/4"	25	16	86.5	50.8	43	67.5	8	41
87398D-20-20	1.1/4"	32	20	100.5	50.8	43	78.5	8	50
87398D-24-20	1.1/2"	32	20	100.5	60.3	50	80.5	8	50
87398D-24-24	1.1/2"	40	24	108	60.3	50	94	8	55
87398D-32-24	2"	40	24	108	71.4	62	94	9.53	55
87398D-32-32	2"	50	32	128.8	71.4	62	114.3	9.53	70

注：适用于 SAE 100R5 软管。Note: Suitable for SAE 100R5 hose.

87698D

90° SAE 法兰 6000 PSI

90° SAE FLANGE 6000 PSI



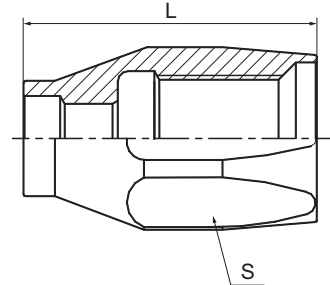
代号 PART NO.	法兰型号 FLANGE SIZE	软管 HOSE BORE		尺寸 DIMENSIONS					
		公称内径 DN	标号 DASH	A	C	D	H	L	S1
87698D-08-08	1/2"	12	08	53	31.7	24	48	7.75	27
87698D-12-10	3/4"	16	10	66.5	41.3	32	56.5	8.76	32
87698D-12-12	3/4"	20	12	79.5	41.3	32	66	8.76	32
87698D-16-12	1"	20	12	79.5	47.6	38	69	9.53	32
87698D-16-16	1"	25	16	86.5	47.6	38	74.5	9.53	41
87698D-20-16	1.1/4"	25	16	86.5	54	44	78.5	10.29	41
87698D-20-20	1.1/4"	32	20	100.5	54	44	89.5	10.29	50
87698D-24-20	1.1/2"	32	20	100.5	63.5	51	94.5	12.57	50
87698D-24-24	1.1/2"	40	24	108	63.5	51	108	12.57	55
87698D-32-24	2"	40	24	108	79.4	67	116	12.57	55
87698D-32-32	2"	50	32	128.8	79.4	67	136.3	12.57	70

注：适用于 SAE 100R5 软管。Note: Suitable for SAE 100R5 hose.

00518

SAE 100 R5 软管可拆式套筒

FERRULE FOR SAE 100 R5 HOSE



代号 PART NO.	软管 HOSE BORE		尺寸 DIMENSIONS	
	公称内径 DN	标号 DASH	L	S
00518-04	-	04	28	17
00518-05	-	05	30.5	19
00518-06	-	06	33	22
00518-08	-	08	42	24
00518-10	-	10	45.5	30
00518-12	-	12	53.5	32
00518-16	-	16	42	36
00518-20	-	20	44.5	46
00518-24	-	24	47	50
00518-32	-	32	57	65